



Product Sheet

Sapio ELN



Easy to Use, Easy to Love

Because you are a scientist, not a database engineer, Sapio Science has created the first no-code, no-SQL Electronic Lab Notebook. With Sapio you can focus on designing and deploying experiments, tracking real-time status, automating instrument data capture, and managing everything from samples to materials and storage. Then sit back, with a mouse click, visualize and analyze results.

Our best-in-class electronic laboratory notebook dramatically improves research productivity. A 10x improvement in productivity is common.

What's more, Sapio's ELN also comes with out-of-the-box configurations for many application areas, and built-in tools, including compound, reaction, CRISPR/plasmid design, and flow cytometry data analytics.

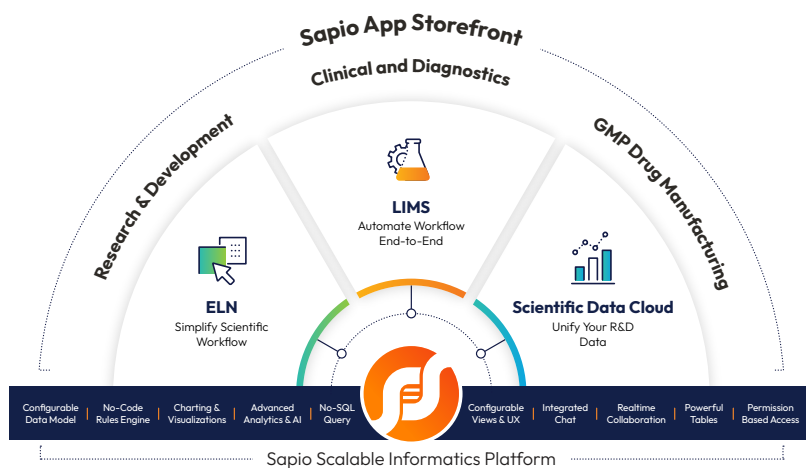
The First Lab Triple Play – ELN, LIMS and Scientific Data Cloud

Sapio Sciences has created the world's first lab triple play – ELN, LIMS, and data cloud combined all-in-one platform.

Design, deploy and document your experiments with **Sapio ELN**, manage your samples, automate your laboratory workflows, analyze your results with **Sapio LIMS**, and unify access to scientific data across instruments and vendor systems with **Sapio Scientific Data Cloud**, through one easy-to-use cloud experience.

Sapio's ELN is a true cloud platform, and it's a complete, easy-to-use product that quickly became an essential tool for my team.

-Top 5 BioTech Company



8 of the Top 10 BioPharma Companies Rely on Sapio Sciences

GSK

abbvie

Bristol Myers Squibb

Biogen

Genentech

labcorp

NOVARTIS

Johnson & Johnson

Create Experiments with Ease

Add and format sections to track experimental details. Invite colleagues with the integrated chat to collaborate in real-time. You and your colleagues can perform live editing on the same experiment and see each other's updates as they are performed.

Secure and Fast

Attach spreadsheets and documents simply by dragging and dropping the document into the experiment. Documents added can be edited directly in the ELN experiment. Document contents instantly become searchable throughout the system.

Calculate with Confidence

Configure formulas easily in data tables to determine results. Transform those data tables into charts and graphs for easier interpretation.



46%
rise in System
Usability Score (SUS)

251%
increase in
experiments

*Top 5 BioTech



Key Features

- Paper-on-glass
- Truly collaborative
- Google Docs of LIMS/ELN
- Integrated MS Office docs
- 3D plating
- Molecule design with synthesis tracking
- Integrated Genome Browser
- Instrument automation
- Control file out, assay data results in
- Analytics models, e.g. curve fitting, etc.
- Design:
 - Plasmids
 - PCR primers
 - Restriction cloning, etc.
 - Vector Modification

Built-in ELN Tools:



Collaboration



Plate
Management



Flow AI



Plasmid/CRISPR &
Compound Design



Formulas



Images



Materials
Tracking



Instrument Data
(SDMS)

